

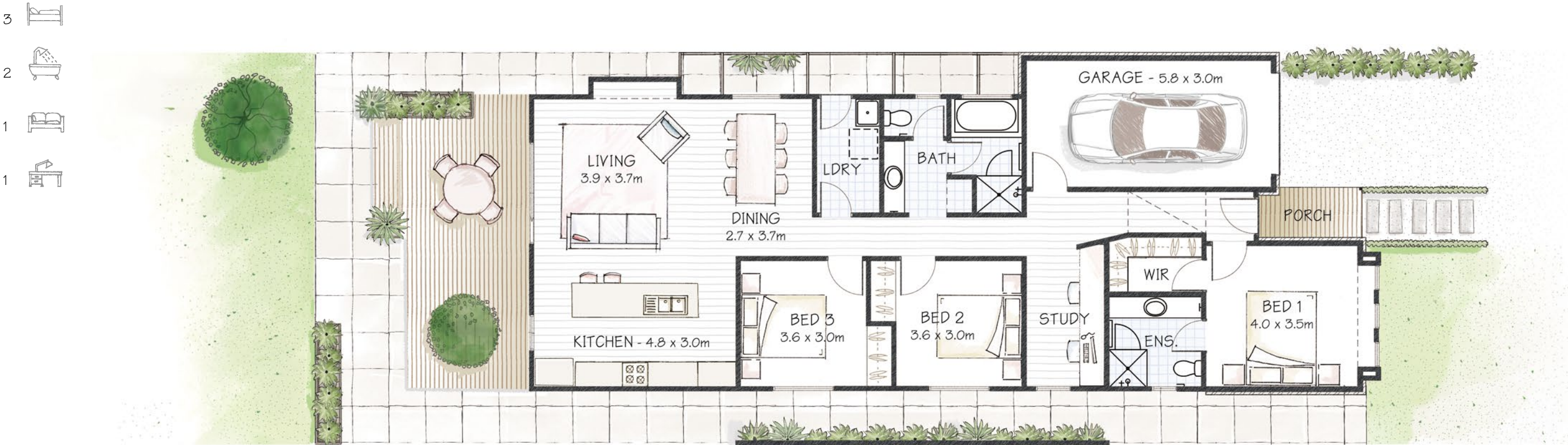
# Dali Villa

## RE-SHAPING THE POTENTIAL OF NARROW BLOCKS

Architecturally designed to minimise passages while maximising function, the Dali Villa is an open plan, roomy home, perfectly suited to 9-10 metre frontage blocks and sub-divisions.



# Dali Villa 155



Width 8.1m  
Depth 20.2m  
Total Area 142.5m<sup>2</sup>  
Recommended Lot Width from 9.0m