

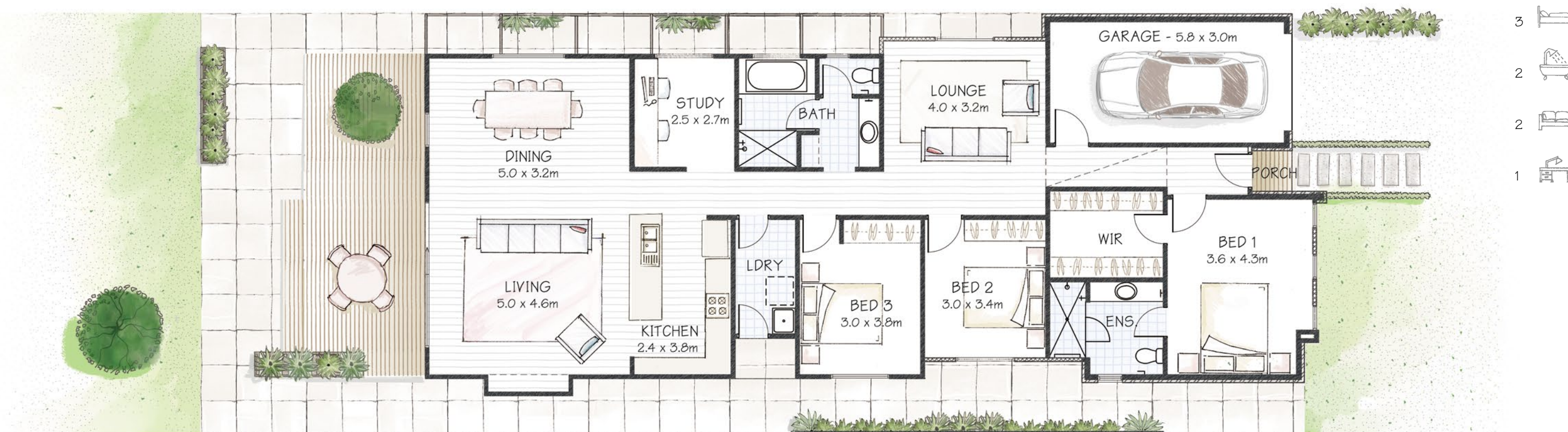
# Dali Villa

## RE-SHAPING THE POTENTIAL OF NARROW BLOCKS

Architecturally designed to minimise passages while maximising function, the Dali Villa is an open plan, roomy home, perfectly suited to 9-10 metre frontage blocks and sub-divisions.



# Dali Villa 185



Width 9.5m

Depth 22.1m

Total Area 183.2m²

Recommended Lot Width from 10.4m