



35 Parnatti Street, Lightsview

\$487,500 - \$497,500

Allotment size 162m²  3  2.5  1

For more information:

Stefan Siciliano 0403 171 489

Ray White Norwood RLA 278530

Chic modern townhouse with premium reserve access at rear

Architecturally designed and custom constructed

2.7m square set ceilings & timber laminate flooring to the ground floor

Spacious contemporary kitchen overlooking the living area with gloss white cabinetry, tiled splashbacks, double recessed sink, stone island bench with waterfall ends and stainless-steel appliances

Generous single garage with access via automatic panel lift door

European style laundry

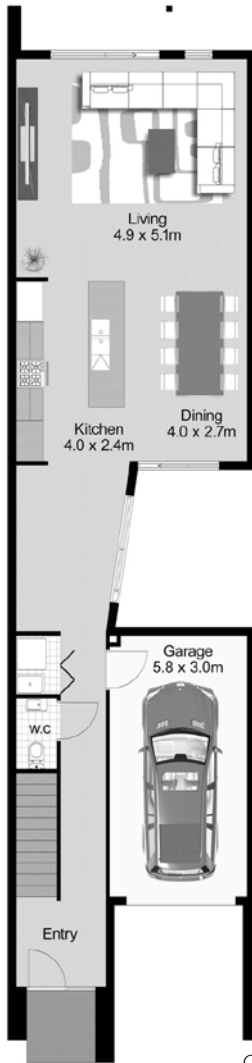
Ducted reverse cycle air-conditioning throughout

Alarm system installed

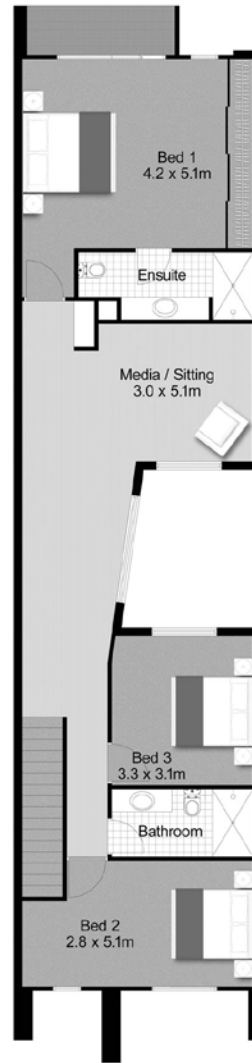
Integrated solar power (3kW)

Instantaneous gas 27 l/pm hot water service





GROUND FLOOR



FIRST FLOOR

