



## Picasso 195

from:

\$370,462

Allotment size 491m<sup>2</sup>



Lot 40 Manno Avenue, ParkVale Estate, Angle Vale

Architecturally designed, energy efficient home for sustainable living

Double garage with automated panel lift door

2700mm high ceilings throughout

Extensive windows and sliding doors to living areas for optimum energy efficiency and thermal performance for year-round comfort.

Robes to all bedrooms

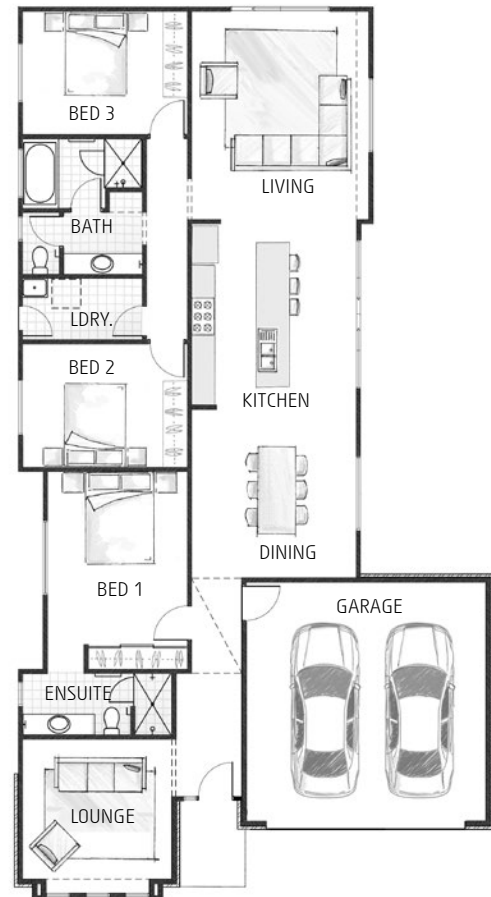
Solar system included

Overhead cupboards and rangehood to kitchen

Ducted reverse cycle air conditioning

Generous footing allowance

Quality fixtures and fittings



for more information please call Gallery Living consultant

**Bill Harding 0490 049 529**

[bill@lshg.com.au](mailto:bill@lshg.com.au)

Land details: Tim Martin 0402 901 104

John Martin Real Estate Angle Vale 255653

