



Picasso 250

from:

\$451,189

18m x 32m (576m²)



Lot 468 Tony Street, Miravale, Angle Vale

Energy efficient home for sustainable living

1.5kw solar system

2700mm high ceilings

Skillion roof with raked ceiling to living, dining & kitchen

Robes to all bedrooms

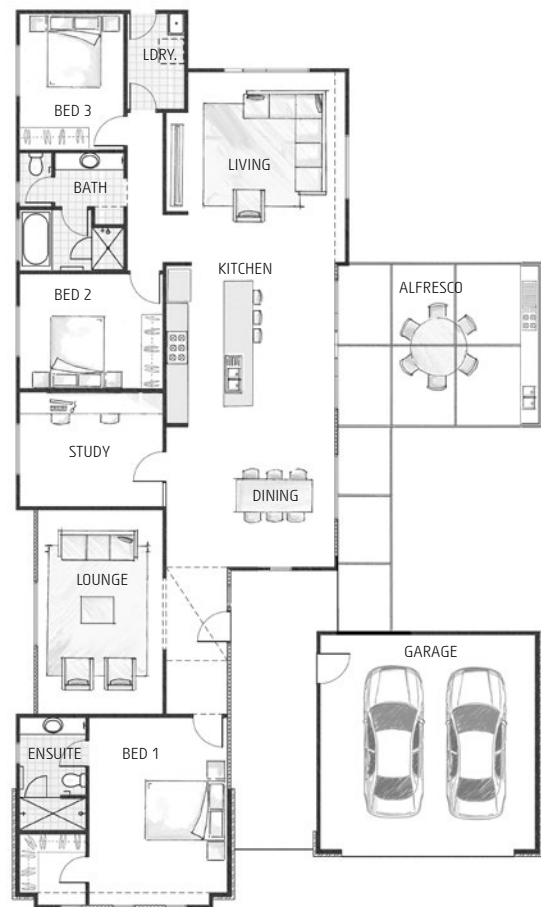
Master bedroom including a walk-in robe and generous ensuite with designer tapware and vanity

Floor coverings included

Ducted reverse cycle air conditioning

Generous allowance for siteworks and footings

25-year Structural Guarantee



for more information please call Gallery Living consultant

Bill Harding 0490 049 529

bill@lshg.com.au

Land details: Luke Biggs 0452 128 952

Lanser Realty RLA 268669

