



## Picasso 195

from:

\$440,600

15m x 30m (450m<sup>2</sup>)



Lot 740 Tolsford Avenue, Mount Barker

Open plan living with full-length feature windows

2700mm high ceilings

Generous kitchen with 800mm stone island bench

Soft-close drawers throughout

Double garage

Automated panel lift garage door

Designer ensuite & bathroom with stainless steel fittings and semi-frameless shower screens

Ducted reverse cycle air-conditioning

2100mm high tiling to the bathroom and ensuite

Stormwater included

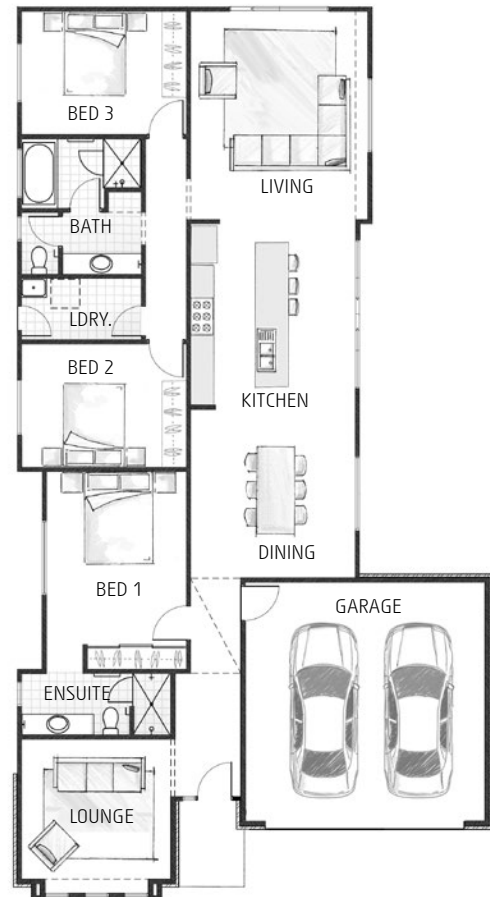
2 living areas

Generous site works allowance

for more information please call Gallery Living consultant

**Rebecca Bird 0414 831 687**

rebecca@lshg.com.au



Land details: Vicki McRae 0417 852 470

PEET Adelaide RLA 217912

