



Picasso 195

from:

\$298,782

Allotment size 540m²



Lot 93 Hartman Circuit, Murray Bridge

Energy efficient home for sustainable living

Robes to all bedrooms

1.5kw solar system included

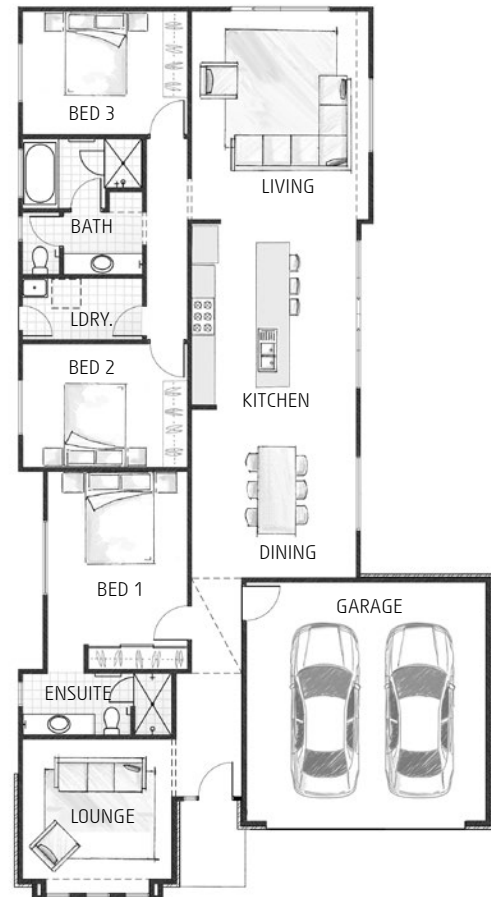
Ducted reverse cycle air conditioning

Generous footing allowance

2700mm high ceilings throughout

Open plan kitchen with 800mm island bench and soft close doors and drawers

Designer ensuite & bathroom with mixer taps, floating vanity and porcelain tiling to nominal 2.1m high



for more information please call Gallery Living consultant

Bill Harding 0490 049 529

bill@lshg.com.au

Land details: Kristy Persello 0427 901 315

Burke Urban RLA 259972

