



## Dali Villa 130

from:

**\$329,000**

11m x 26.6m (295m<sup>2</sup>)

3 2 1

### Lot 15 Adore Estate, Mount Barker

1.5kw solar system

Open plan living, 2.7m (9ft) ceilings with full-length feature windows

Generous kitchen with 800mm waterfall island bench and overhead cupboards

Linen and broom cupboards

Soft-close drawers and doors throughout

Robes to all bedrooms

Designer ensuite & bathroom with mixer taps, floating vanity and porcelain tiling to nominal 2.1m high

Vinyl floor boards, carpets and decking

NBN provision

Daikin ducted reverse cycle air conditioning throughout

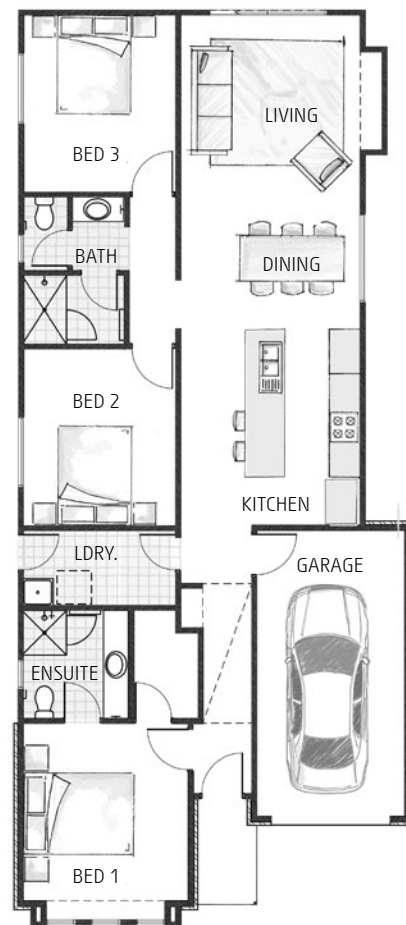
Genuine footings and site works costs

Developer, Council and Building Code requirements

for more information please call Gallery Living consultant

**Chris Bryant 0407 770 553**

[chris@lshg.com.au](mailto:chris@lshg.com.au)



Land details: Steve Testar 0409 093 842  
Monopoly Property Group RLA 272857



Images are shown for illustrative purposes and may not represent the final product. Price excludes air conditioning, floor coverings, window treatments, paving, retaining walls (if required), landscaping or fencing unless otherwise stated above. Final price will vary depending on selections, engineering, council requirements and adjustments to allowances. All sales and contracts are subject to final council and developer approval. The land referred to in this house and land package is not owned by Gallery Living and we make no representations about the suitability of the land to build on or otherwise. \*Visit [www.galleryliving.com.au](http://www.galleryliving.com.au) for more information. BLD175837