



Picasso 195

from:

\$377,500

12.5m x 32m (400m²)*

3 2 2

Lot 260 Swallowtail Crt, Clover Park, Mount Barker

*Allotment is benched and retained

1.5kw solar system

Generous kitchen with 800mm waterfall island bench and overhead cupboards

Open plan living, 2.7m (9ft) ceilings with full-length feature windows

Soft-close drawers and doors throughout

Robes to all bedrooms

Designer ensuite & bathroom with mixer taps, floating vanity and porcelain tiling to nominal 2.1m high

Vinyl floor boards, carpets and decking

NBN provision

Daikin ducted reverse cycle air conditioning throughout

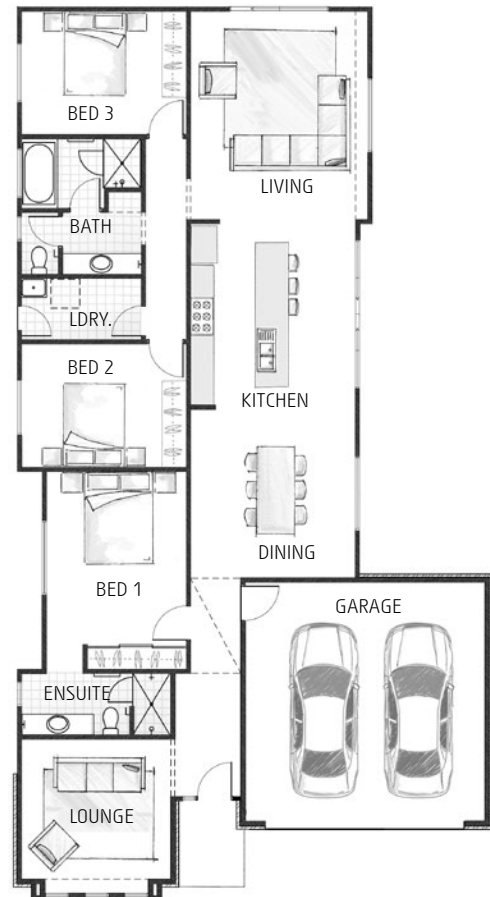
Genuine footings and site works costs

Developer, Council and Building Code requirements

for more information please call Gallery Living consultant

Chris Bryant 0407 770 553

chris@lshg.com.au



Land details: Karen Illanes 0433 784 005
Lanser Realty RLA 268669



Images are shown for illustrative purposes and may not represent the final product. Price excludes air conditioning, floor coverings, window treatments, paving, retaining walls (if required), landscaping or fencing unless otherwise stated above. Final price will vary depending on selections, engineering, council requirements and adjustments to allowances. All sales and contracts are subject to final council and developer approval. The land referred to in this house and land package is not owned by Gallery Living and we make no representations about the suitability of the land to build on or otherwise. *Visit www.galleryliving.com.au for more information. BLD175837