



## Rembrandt 300

from:

# \$566,000

Min. lot width: 12.5m



### Seaford Meadows, South Estate

Open plan living with full-length feature windows

2.7m ceiling to ground floor, 2.55m to upper floor

Generous kitchen with 800mm waterfall end island bench

Soft-close cabinetry throughout

Robes to all bedrooms

Linen and broom cupboards

Designer ensuite & bathroom with mixer taps, floating vanity and porcelain tiling to nominal 2.1m high

Timber veneer flooring to living and carpets to Bedrooms

Additional South Estate encumbrance upgrades including NBN provision

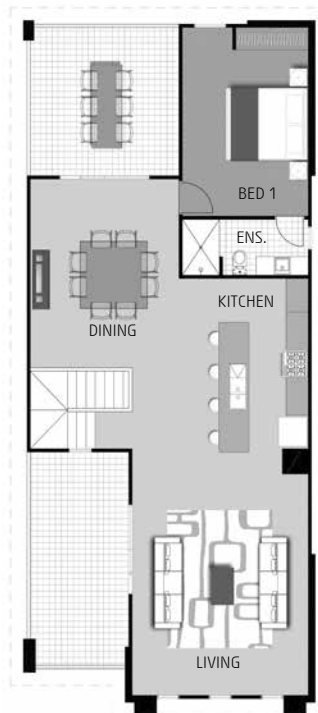
Fully ducted, reverse cycle air conditioning throughout

Genuine footings and site works costs

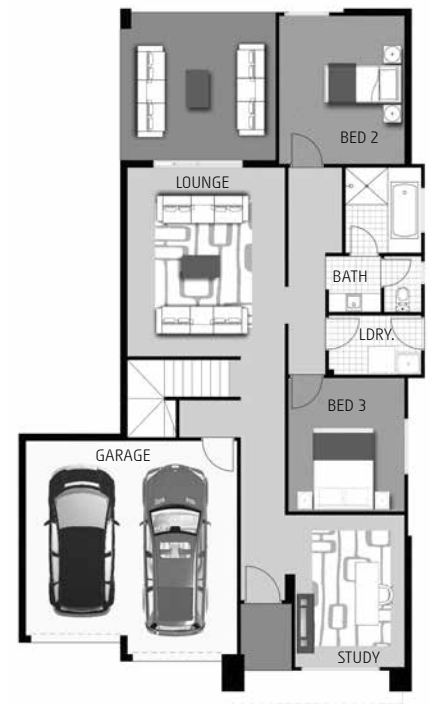
for more information please call Gallery Living consultant

**Chris Bryant 0407 770 553**

[chris@lshg.com.au](mailto:chris@lshg.com.au)



FIRST FLOOR



GROUND FLOOR

Land details: Maurice Jones 0407 236 321

Fairland Group P/L RLA 274 625



Images are shown for illustrative purposes and may not represent the final product. Price excludes air conditioning, floor coverings, window treatments, paving, retaining walls (if required), landscaping or fencing unless otherwise stated above. Final price will vary depending on selections, engineering, council requirements and adjustments to allowances. All sales and contracts are subject to final council and developer approval. The land referred to in this house and land package is not owned by Gallery Living and we make no representations about the suitability of the land to build on or otherwise. \*Visit [www.galleryliving.com.au](http://www.galleryliving.com.au) for more information. BLD175837