

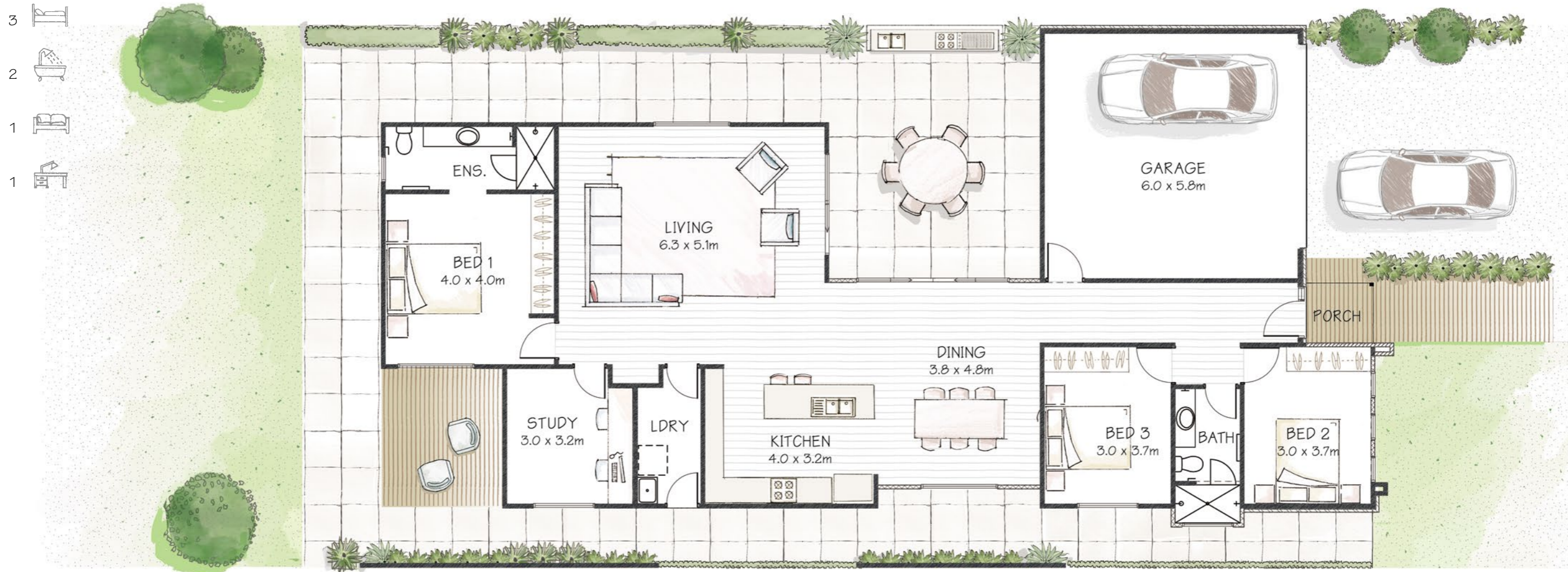
Monet

STUNNING COURTYARD LIVING

The centre-piece of the Monet is a large internal courtyard drawing natural light and fresh air into the surrounding living areas. This creates a feeling of light filled spaciousness – perfect for indoor/outdoor entertaining. The courtyard also separates living areas for solitude when needed.



Monet 200



Width 11.9m

Depth 24.1m

Total Area 197.0m²

Recommended Lot Width from 12.8m